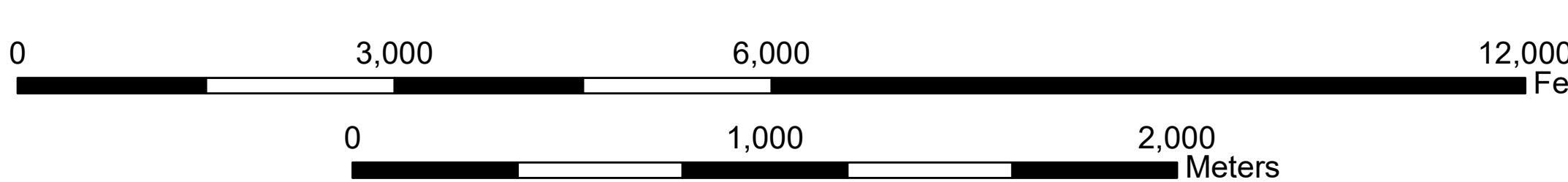
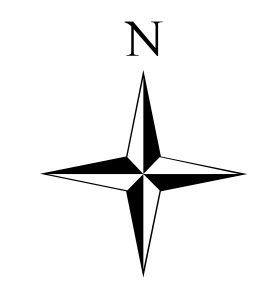
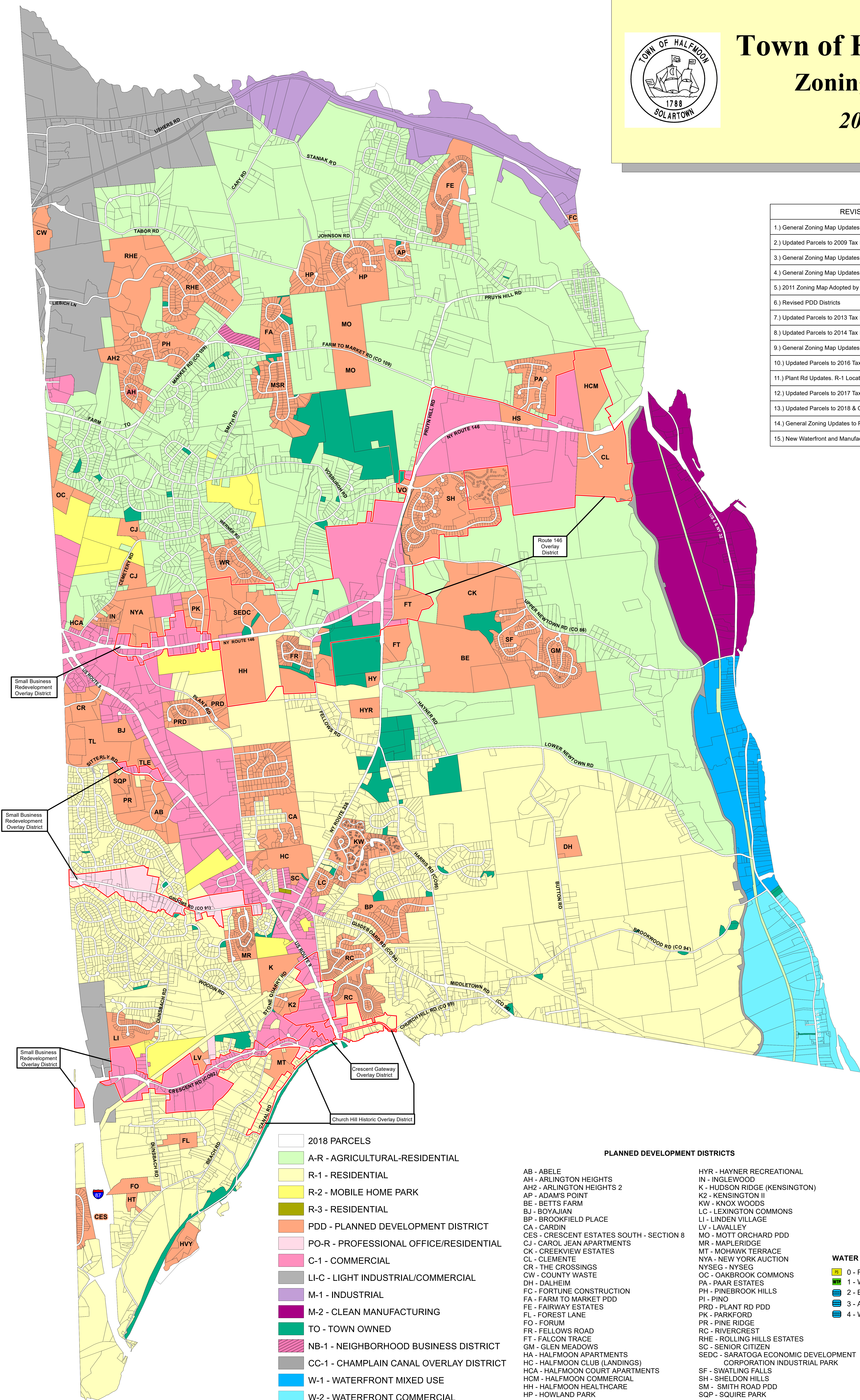


Town of Halfmoon Zoning Map 2019

REVISIONS	DATE
1.) General Zoning Map Updates	06/30/2009
2.) Updated Parcels to 2009 Tax Parcel Boundaries	09/08/2009
3.) General Zoning Map Updates	05/17/2010
4.) General Zoning Map Updates and Parcels Updated to 2010	09/22/2011
5.) 2011 Zoning Map Adopted by Town Board	11/02/2011
6.) Revised PDD Districts	02/27/2014
7.) Updated Parcels to 2013 Tax Parcel Boundaries	02/27/2014
8.) Updated Parcels to 2014 Tax Parcel Boundaries	09/10/2014
9.) General Zoning Map Updates	01/26/2015
10.) Updated Parcels to 2016 Tax Parcel Boundaries	09/14/2016
11.) Plant Rd Updates. R-1 Location Re-Zoned to PO-R and C-1	08/02/2017
12.) Updated Parcels to 2017 Tax Parcel Boundaries	09/04/2018
13.) Updated Parcels to 2018 & General Zoning Updates to PDDs	12/18/2018
14.) General Zoning Updates to PDDs	04/30/2019
15.) New Waterfront and Manufacturing Zones & Overlay Additions	08/01/2019



- 2018 PARCELS
- A-R - AGRICULTURAL-RESIDENTIAL
- R-1 - RESIDENTIAL
- R-2 - MOBILE HOME PARK
- R-3 - RESIDENTIAL
- PDD - PLANNED DEVELOPMENT DISTRICT
- PO-R - PROFESSIONAL OFFICE/RESIDENTIAL
- C-1 - COMMERCIAL
- LI-C - LIGHT INDUSTRIAL/COMMERCIAL
- M-1 - INDUSTRIAL
- M-2 - CLEAN MANUFACTURING
- TO - TOWN OWNED
- NB-1 - NEIGHBORHOOD BUSINESS DISTRICT
- CC-1 - CHAMPLAIN CANAL OVERLAY DISTRICT
- W-1 - WATERFRONT MIXED USE
- W-2 - WATERFRONT COMMERCIAL

PLANNED DEVELOPMENT DISTRICTS

- AB - ABELE
- AH - ARLINGTON HEIGHTS
- AH2 - ARLINGTON HEIGHTS 2
- AP - ADAM'S POINT
- BE - BETTS FARM
- BJ - BOYAJIAN
- BP - BROOKFIELD PLACE
- CA - CARDIN
- CES - CRESCENT ESTATES SOUTH - SECTION 8
- CJ - CAROL JEAN APARTMENTS
- CK - CREEKVIEW ESTATES
- CL - CLEMENTE
- CR - THE CROSSINGS
- CW - COUNTY WASTE
- DH - DALHEIM
- FC - FORTUNE CONSTRUCTION
- FA - FARM TO MARKET PDD
- FE - FAIRWAY ESTATES
- FL - FOREST LANE
- FO - FORUM
- FR - FELLOWS ROAD
- FT - FALCON TRACE
- GM - GLEN MEADOWS
- HA - HALFMOON APARTMENTS
- HC - HALFMOON CLUB (LANDINGS)
- HCA - HALFMOON COURT APARTMENTS
- HCM - HALFMOON COMMERCIAL
- HH - HALFMOON HEALTHCARE
- HP - HOWLAND PARK
- HS - HALFMOON SELF STORAGE
- HT - HATTER
- HVY - HALFMOON VILLAGE & YACHT
- HY - HAYNER
- HYR - HAYNER RECREATIONAL
- IN - INGLEWOOD
- K - HUDSON RIDGE (KENSINGTON)
- K2 - KENSINGTON II
- KW - KNOX WOODS
- LC - LEXINGTON COMMONS
- LI - LINDEN VILLAGE
- LV - LAVALLEY
- MO - MOTT ORCHARD PDD
- MR - MAPLERIDGE
- MT - MOHAWK TERRACE
- NYA - NEW YORK AUCTION
- NYSEG - NYSEG
- OC - OAKBROOK COMMONS
- PA - PAAR ESTATES
- PH - PINEBROOK HILLS
- PI - PINO
- PRD - PLANT RD PDD
- PK - PARKFORD
- PR - PINE RIDGE
- RC - RIVERCREST
- RHE - ROLLING HILLS ESTATES
- SC - SENIOR CITIZEN
- SEDC - SARATOGA ECONOMIC DEVELOPMENT CORPORATION INDUSTRIAL PARK
- SF - SWATLING FALLS
- SH - SHELDON HILLS
- SM - SMITH ROAD PDD
- SQP - SQUIRE PARK
- TL - TWIN LAKES
- TLE - TWIN LAKES EXTENSION
- VO - VOSBURGH
- WR - WERNER ROAD

WATER DEPARTMENT FACILITIES

- 0 - RAW WATER INTAKE
- 1 - WATER TREATMENT PLANT
- 2 - BROOKWOOD ROAD WATER TANK
- 3 - ANGLE LN. WATER TANK
- 4 - WERNER RD. WATER TANKS

Last Revised: August 2019



Data Source: Town of Halfmoon Planning Department, Assessor's Office, Saratoga County Planning Department Tax Parcel Year 2018

V:\Projects\ANYK4\GIS\2019\GIS\Map\Official\Halfmoon Zoning_2019_08119.mxd